

Research Consortium on Risks associated with Livestock Intensification (PRISE)



Scientific Program
2009-2013

Truong Van Dung, President
C. Le Bas, Coordinator
B. Faye, Scientific Adviser



Prise Partners



MARD/CIRAD
Hanoi, 29 mai 2008



2

Agenda

Dec 2007	PRISE committees: Need for new scientific program and priorities
Jan-March 2008	Draft of Scientific Program (fr, vn)
11 April 2008	Discussion and Validation (Prise)
May 2008	Final meeting report document on Prise scientific Program 2009-2013
29 May 2008	MARD/CIRAD meeting and validation of Prise Scientific Program

MARD/CIRAD
Hanoi, 29 mai 2008



3

Prise Dynamics and Evolution since 2003

PRISE Creation (2003)

- High increase of the local demand in animal products (milk, meat, fish farming products) in term of quantity and quality ;
- High land constraints leading to an intensification of the animal production with high environmental impact ;

MARD/CIRAD
Hanoi, 29 mai 2008



5

PRISE Creation (2003)

- High animal biodiversity but risks of erosion due to intensification process ;
- High changes in labour organization linked to the « doi moi » in the 90s ;

MARD/CIRAD
Hanoi, 29 mai 2008



6

PRISE Creation (2003)

- Demand from vietnamese partners (biodiversity, dairy national plan), but working in different institutes ;
- For CIRAD, high investisment in Vietnam considered as an example of the high animal intensification process.

MARD/CIRAD
Hanoi, 29 mai 2008



7

Consequences for PRISE

- Important part is capacity building for partners (scientific training in France or in Vietnam)
- Disciplinary (genetic, animal husbandry, nutrition) and sectorial (milk, pig farming, fish farming) scientific approach and 5 research priorities.
- Main part represented by BIODIVA project in term of budget and equipment.

MARD/CIRAD
Hanoi, 29 mai 2008



8

2007 FIRST CHANGES NEEDED

Booklet (Vn, Eng, Fr)
<http://www.prise-pcp.org>

First changes needed

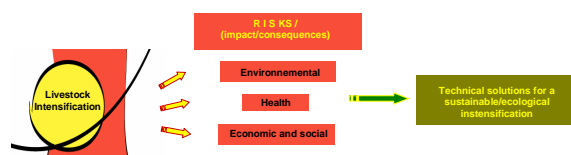
- Develop more integrative than disciplinary approach ;
- Assess and manage health risks of animal production under intensification process (AI crisis, Food safety, etc) ;
- Include more research on environmental, economic and social impact of livestock intensification

MARD/CIRAD
Hanoi, 29 mai 2008



10

PRISE logical framework (Dec. 2007)

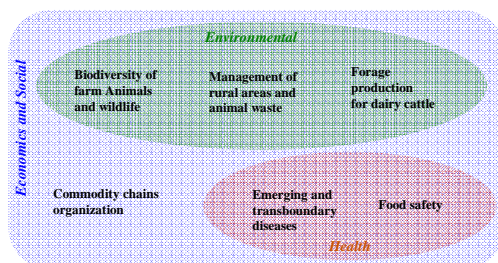


MARD/CIRAD
Hanoi, 29 mai 2008



11

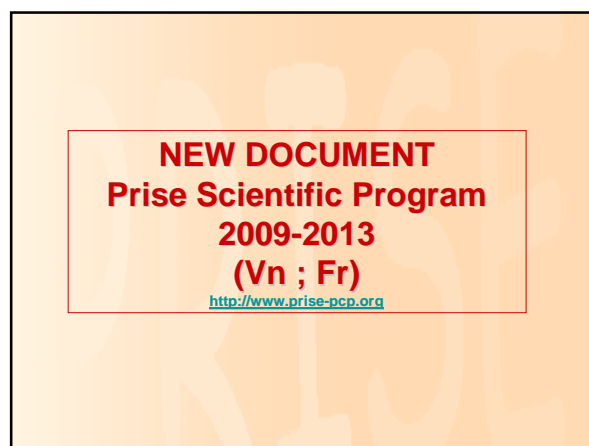
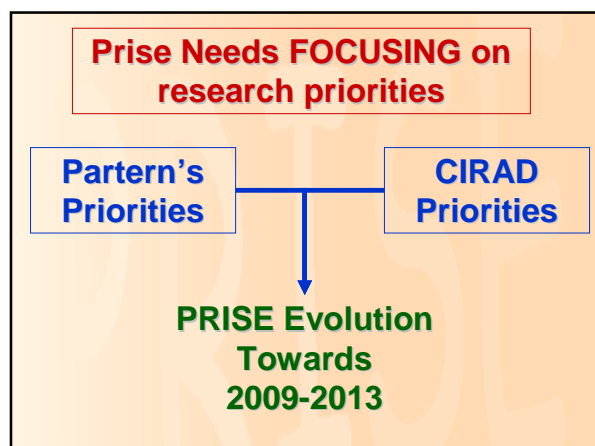
Research topics (Dec. 2007)



MARD/CIRAD
Hanoi, 29 mai 2008



12



**Research activities:
Main evolutions 2009...**

- Biodiversity => end of BIODIVA and FFEM in 2008 ; J.-C. Maillard (DRASEC), M. Pédrone (dep. June 2008)

⇒ Sustainability of small holders' farms (producers' organization and access to markets) ; Management of animal waste (Biogaz projects and other projects on the basis of BIODIVA results) ; Resistance to diseases (project GENAVIFLU)

2009-2013

MARD/CIRAD
Hanoi, 29 mai 2008

15

**Research activities:
Main evolutions 2009...**

- Management of animal waste => J.-M. Médoc (expert affected in sept. 2008)

⇒ Activities following up E3P project on pig waste:

- 1- Innovation project on animal waste treatment (Agrifiltre® technology) - AIV
- 2- IPSLog project (Eco-benefits from transforming pig slurry in Vietnam) submitted on pig slurry treatment and valorization

2009-2013

MARD/CIRAD
Hanoi, 29 mai 2008

16

**Research activities:
Main evolutions 2009...**

- Forage production for dairy cattle: End of Duras, P. Salgado (dep. in April 2008)

⇒ Future activities focused on : Consequences of implemented innovations = Relationship between innovations, land use dynamics and the farming systems' changes (PHD); Behaviour and labor organization following innovations (ADD-Trans), bio-economics and land use modelling, Sustainability of dairy farming systems

2009-2013

MARD/CIRAD
Hanoi, 29 mai 2008

17

**Research activities:
Main evolutions 2009...**

- Emerging and transboundary diseases (S. Desvaux) : GRIPAVI
- Food safety in animal products (C. Le Bas, dep. 2008 or 2009 ? Future ?) National project, FSP

⇒ Closely related (zoonoses, public health, epidemiology, risk analysis, etc)

⇒ Are a priority for Vietnam and in the Cirad new strategic plan

⇒ New affectation on Food Safety, Fusion with Em. Dis. ?

⇒ Reinforcing other animal diseases linked with research in Thailand (PCP regionalization) ?

2009-2013

MARD/CIRAD
Hanoi, 29 mai 2008

18

Research activities: Main evolutions 2009...

- More research needed in Economics and Social (V. Alary, duty travel april 2008):
- 1. Sustainable SizeS for small scale farmers ?
Diversification vs Specialization, thresholds ?
=> Topic = **Development of sustainable livestock farming systems**
- 2. Price variation and transaction costs, social risk, links with other topics (sanitary risk analysis...)
=> Topic = **Uncertainty and risk analysis in animal commodity chains**

MARD/CIRAD
Hanoi, 29 mai 2008



19

Research activities: Main evolutions 2009...

- More research needed in Economics and Social:
- 1. **Development of sustainable livestock farming systems**
=> development of a bio-economic model in the Moc Chau region and extension to another region
=> study of the sustainability of diversified livestock systems oriented to pig or/and poultry activities

MARD/CIRAD
Hanoi, 29 mai 2008



20

Research activities: Main evolutions 2009...

- More research needed in Economics and Social:
- 2. **Uncertainty and risk analysis in animal commodity chains**
=> assessment of sanitary policies (vaccination strategies, economic analysis in epidemiologic models)
=> Impact of AI on restructuring of poultry chain
=> Sustainable approach for animal commodity chains (risks due to internationalization of exchanges)

MARD/CIRAD
Hanoi, 29 mai 2008



21

Research topics: Main activities 2008

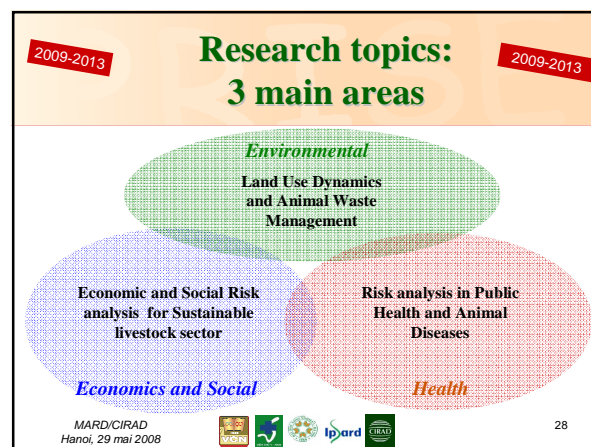
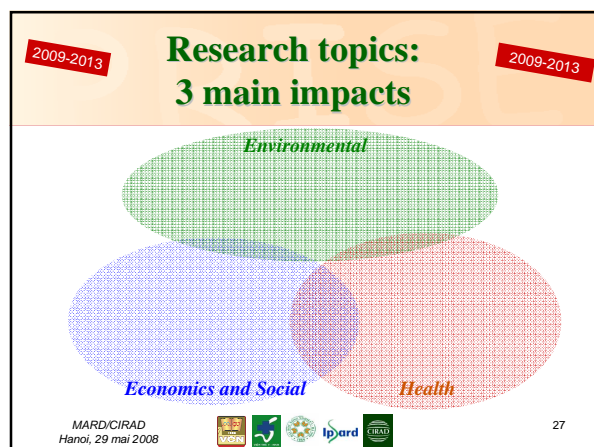
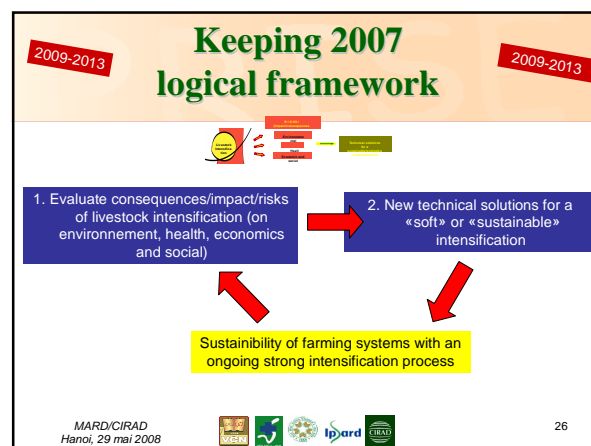
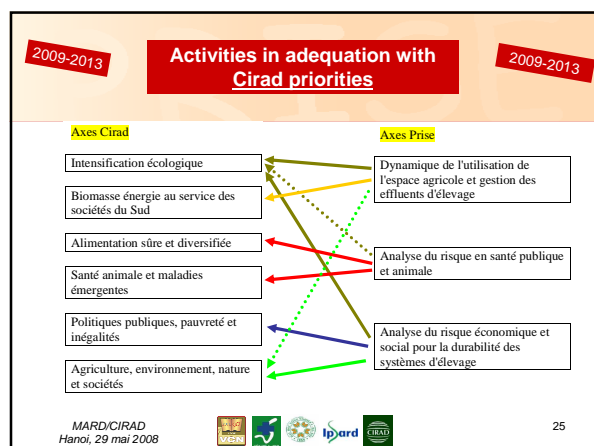
PRISE research areas	Prise research activities	Cirad human resources (Fr+in France)	Projects (Ongoing, Submitted)
Environment	Management of rural areas and animal waste	Impact of public policies on rural land use and livestock practices P. Salgado ; B. Faye (Fr)	ADD-TRANS
	Biodiversity of farm animals and wildlife	Biodiversity of farm animals and wildlife J.-C. Maillard (leaving Febr 2008) M. Pedrono (leaving June 2008)	BIODIVA, FFEM
	Forage production for Dairy Cattle	Forage production for Dairy Cattle P. Salgado (leaving April 2008)	DURAS, ADD-TRANS, ETSP/VBDP
Health	Emerging and transboundary diseases	Emerging and transboundary diseases S. Desvaux ; C. Trevenec (PHD)	ADAT, GRIPAVI
	Food safety	Food safety C. Le Bas	National Project, FSP
Economics and Sociology	Benefit-cost analysis of vaccination against AI	Benefit-cost analysis of vaccination against AI S. Desvaux ; M. Peyre (Fr)	GRIPAVI
	Impact of bird flu on the restructuring of poultry commodity chain	Impact of bird flu on the restructuring of poultry commodity chain M. Fiquié (Fr)	
	Dairy farming systems and labor organization	Dairy farming systems and labor organization P. Salgado	ADD-TRANS

22

Research topics: Main activities

PRISE research areas	Prise research topics	Cirad human resources (Fr+in France)	Projects
Environment	Land Use Dynamics	P. Salgado (Fr) ; B. Faye (Fr)	ADD-TRANS
	Management of Animal Waste	J.-M. Médoc (2008)	AIV IPSLOG
Health	Risk analysis in Public health and Animal diseases	Emerging and transboundary diseases S. Desvaux ; C. Trevenec (PHD) ; ADAT, GRIPAVI, GENAVIFLU J.-C. Maillard ? Food safety (2009?) C. Le Bas (2009?)	FSP? National Projects
	Uncertainty and Risk Analysis in Animal Commodity chains	S. Desvaux ; M. Peyre (Fr) ; M. Fiquié (Fr) Health economist, UR AGIRs? (2008?) G. Duteurtre (Fr) Economist in Animal commodity chains UR18?	GRIPAVI
Economics and Sociology	Economic and Social Risk analysis for a Sustainable Livestock sector	Sustainability of Livestock Farming Systems P. Salgado (Fr) ; V. Alary (Fr), PHD on bio-economics models (2009-2011?)	ADD-TRANS

PRISE research areas	Prise research activities	Partners' research priorities	Cirad human resources (Fr+in France)	Projects
Environment	Land Use Dynamics	Land Use Dynamics	P. Salgado (Fr) ; B. Faye (Fr)	ADD-TRANS
	Management of Animal Waste	Environment, Land Use management and integration of Breeding systems in Agriculture	J.-M. Médoc (2008)	AIV IPSLOG
Health	Risk analysis in Public health and Animal diseases	Emerging diseases Immunology, resistance to diseases	S. Desvaux ; C. Trevenec (PHD) ; ADAT, GRIPAVI, GENAVIFLU J.-C. Maillard ? Food safety (2009?) C. Le Bas (2009?)	FSP? National Projects
	Uncertainty and Risk Analysis in Animal Commodity chains	Impact of bird flu on the restructuring of poultry commodity chain Disease economics (bird flu, PRRS, FMD...) Production and Input Cost Variations Social risks associated with perception, organization and transaction costs Links with sanitary risk analysis	S. Desvaux ; M. Peyre (Fr) ; M. Fiquié (Fr) Health economist, UR AGIRs? (2008?) G. Duteurtre (Fr) Economist in Animal commodity chains UR18?	GRIPAVI
Economics and Sociology	Economic and Social Risk analysis for a Sustainable Livestock sector	Optimal farm size and balance between Diversification vs Specialization rapport diversification/spécialisation, Economics in animal commodity chains, agriculture policies and modelling	P. Salgado (Fr) ; V. Alary (Fr), PHD on bio-economics models (2009-2011?)	ADD-TRANS



Dicussion needed

- Validation of MARD/Parterns' priorities for PRISE
- Validation of CIRAD priorities for PRISE
- Cirad human resources and further support for « PRISE 2 » or « PRISE 3 »

MARD/CIRAD
Hanoi, 29 mai 2008

29